

# Medical Physics Report

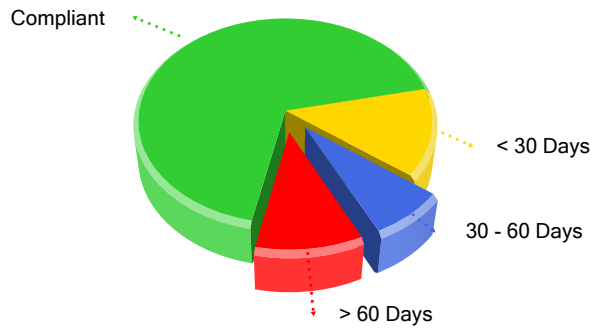
## Planned Maintenance - Compliance Analysis

Item	Quantity	Out of	%
Compliant Devices - High Risk	278	408	68.14
Compliant Devices - Medium Risk	1123	1647	68.18
Compliant Devices - Low Risk	335	447	74.94

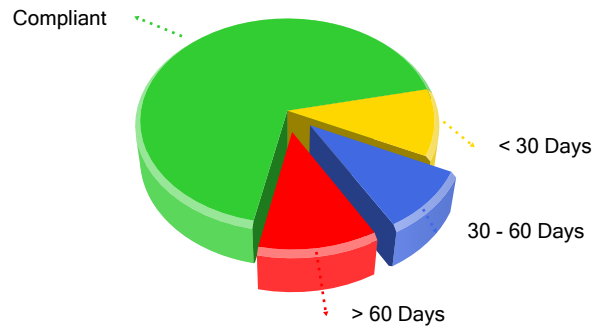
## Planned Maintenance - Non-Compliance Analysis

Item	Quantity	Out of	%
Non-Compliant Devices - High Risk	130	408	31.86
Non-Compliant Devices - Medium Risk	524	1647	31.82
Non-Compliant Devices - Low Risk	112	447	25.06

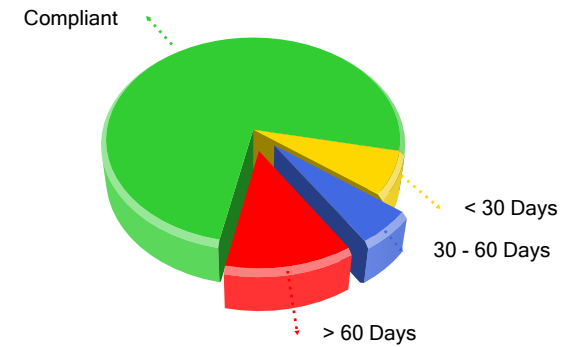
PPM Non-Compliance - High Risk Devices



PPM Non-Compliance - Medium Risk Devices



PPM Non-Compliance - Low Risk Devices

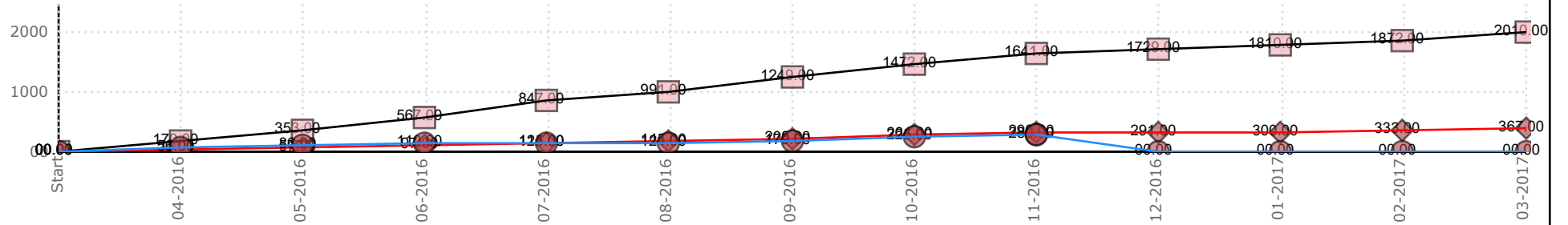


# Medical Physics Report

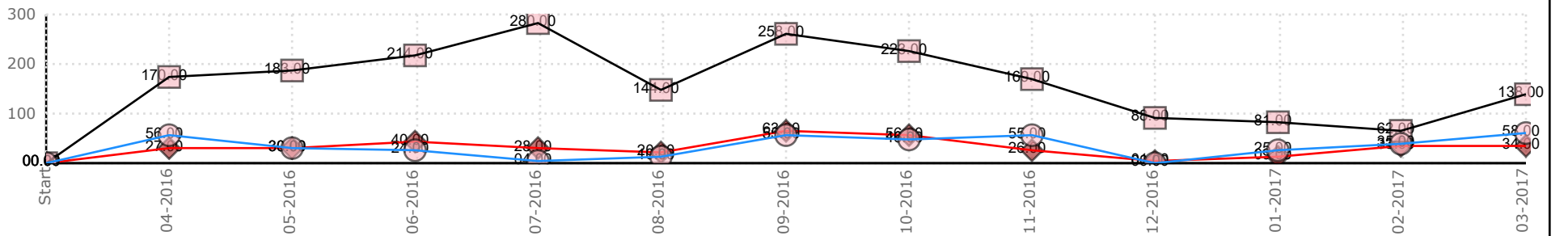
## PPM Work Planned in Period 1 to 31 - May 2016

Item	Quantity
Planned in Period - High Risk	23
(of which) Completed in Period	19
Missed	4
% Completion	82.61
Planned in Period - Medium Risk	202
(of which) Completed in Period	147
Missed	55
% Completion	72.77
Planned in Period - Low Risk	26
(of which) Completed in Period	25
Missed	1
% Completion	96.15

# Planned Maintenance Monthly Workload



Cumulative PPM Jobs Completed - by Risk Level



PPM Jobs Completed per Month - by Risk Level

# Medical Physics Report

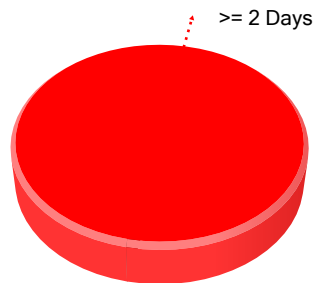
## Corrective Jobs in Period 1 to 31 - May 2016

Item	Quantity
Corrective Jobs Opened - High Priority	6
Corrective Jobs Closed - High Priority	6
Corrective Jobs Opened - Normal Priority	89
Corrective Jobs Closed - Normal Priority	96
Corrective Jobs Opened - Low Priority	31
Corrective Jobs Closed - Low Priority	30

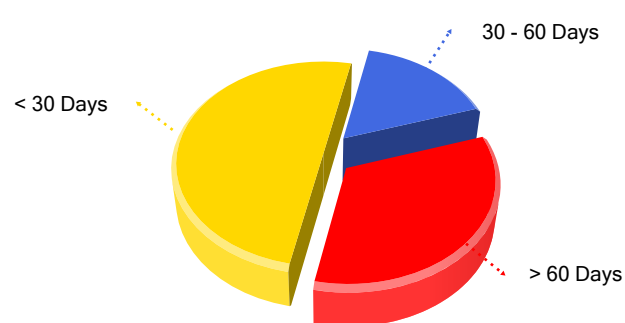
## Corrective Jobs - Still Open at 22/06/2017

Item	Quantity
Open Corrective Jobs - High Priority	2
Open Corrective Jobs - Normal Priority	6
Open Corrective Jobs - Low Priority	32

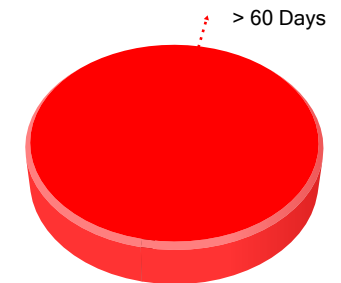
Open Corrective Jobs - High Priority



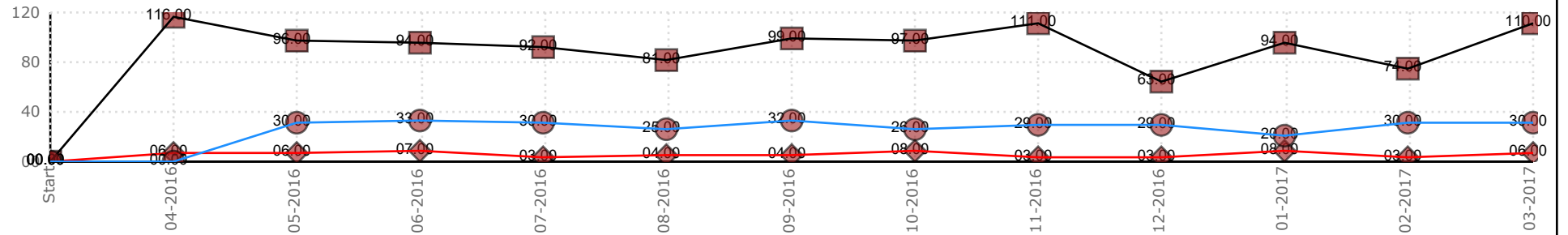
Open Corrective Jobs - Normal Priority



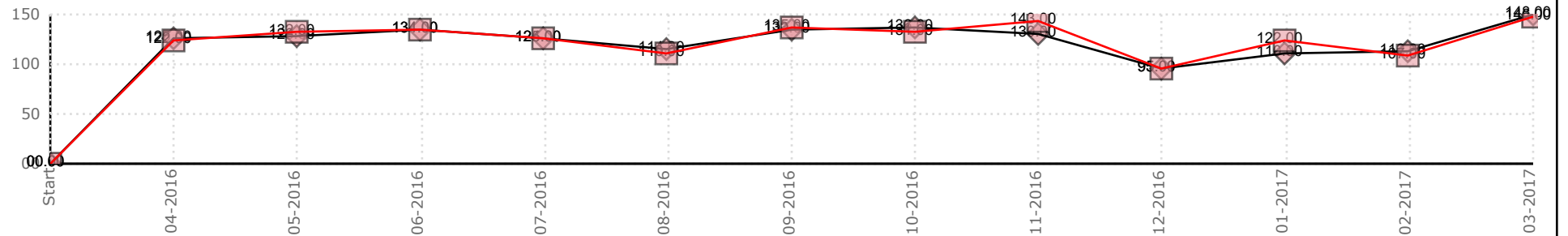
Open Corrective Jobs - Low Priority



# Corrective Maintenance Monthly Workload

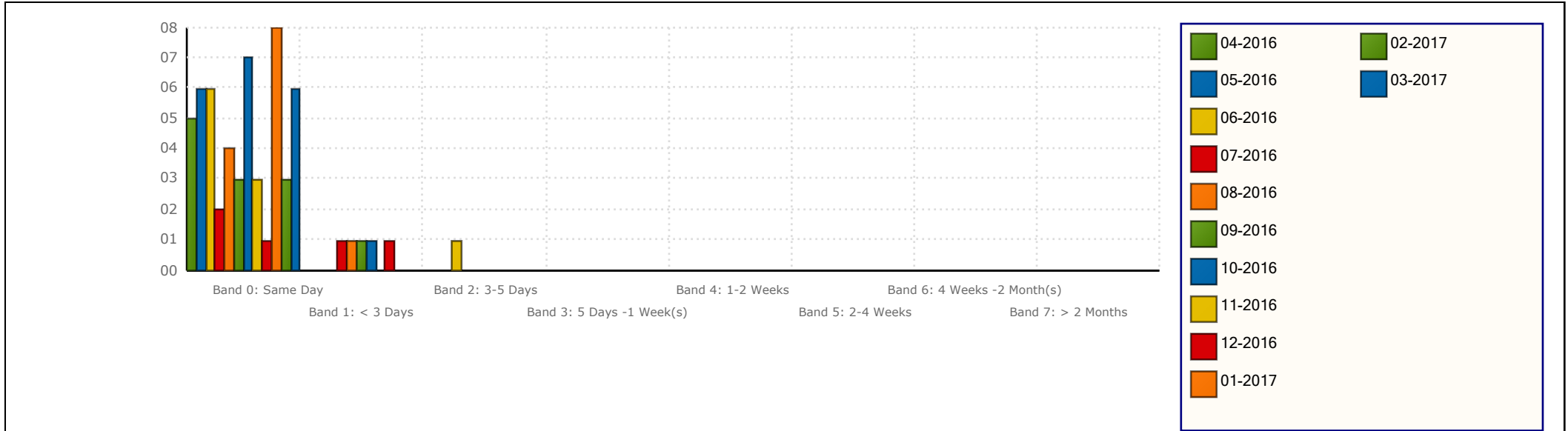


Corrective Jobs Completed per Month - by Priority

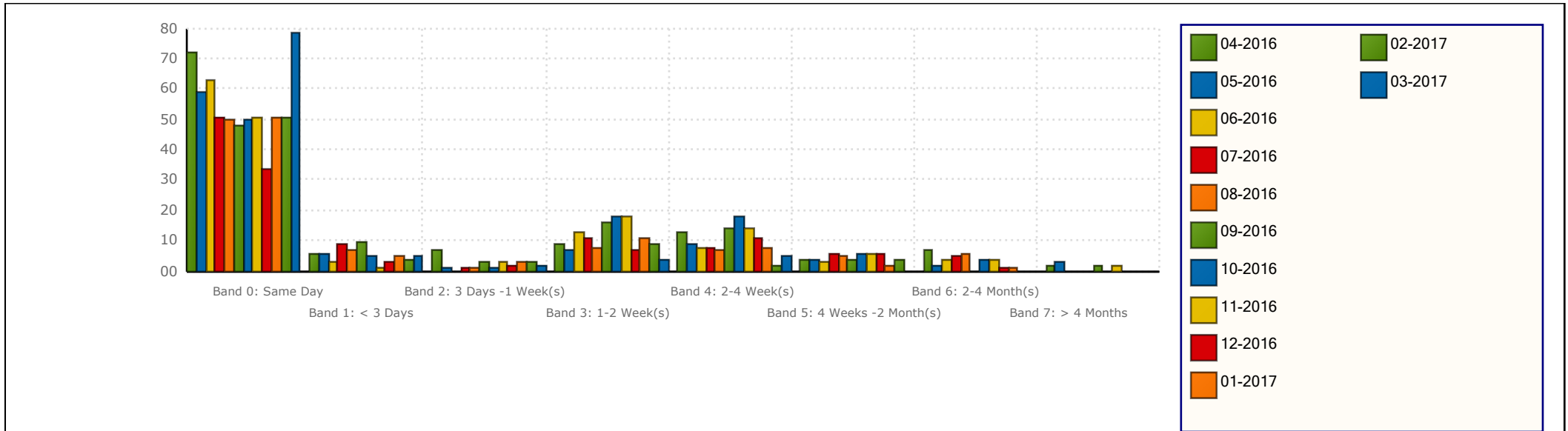


Total Corrective Jobs Raised and Completed - by Month

# Annual Rectification Time Analysis

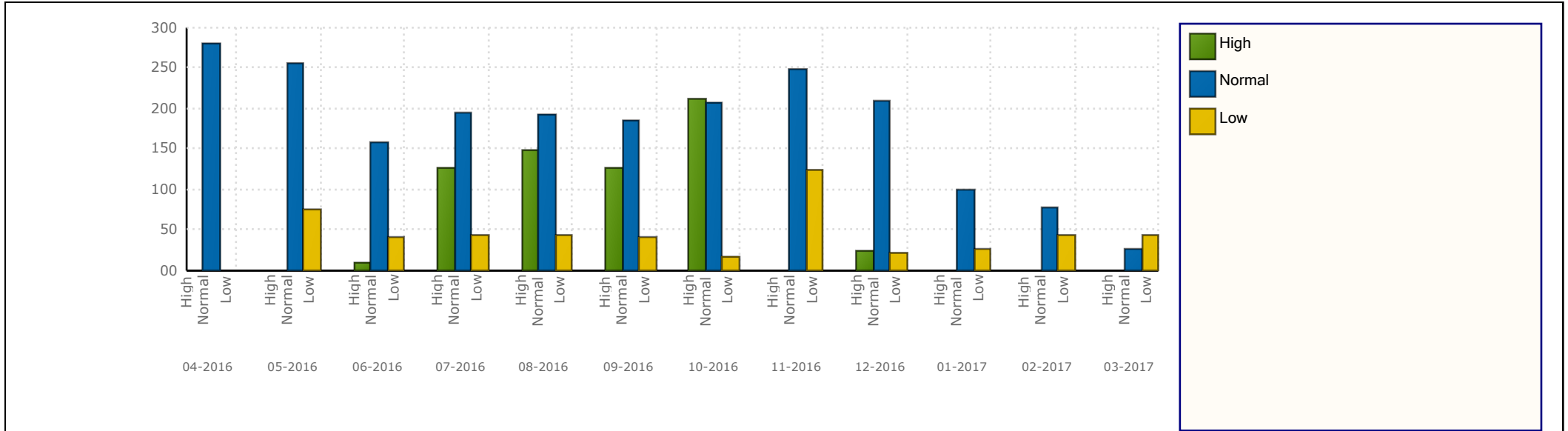


Monthly High Priority Corrective Job Count by Rectification Time Band

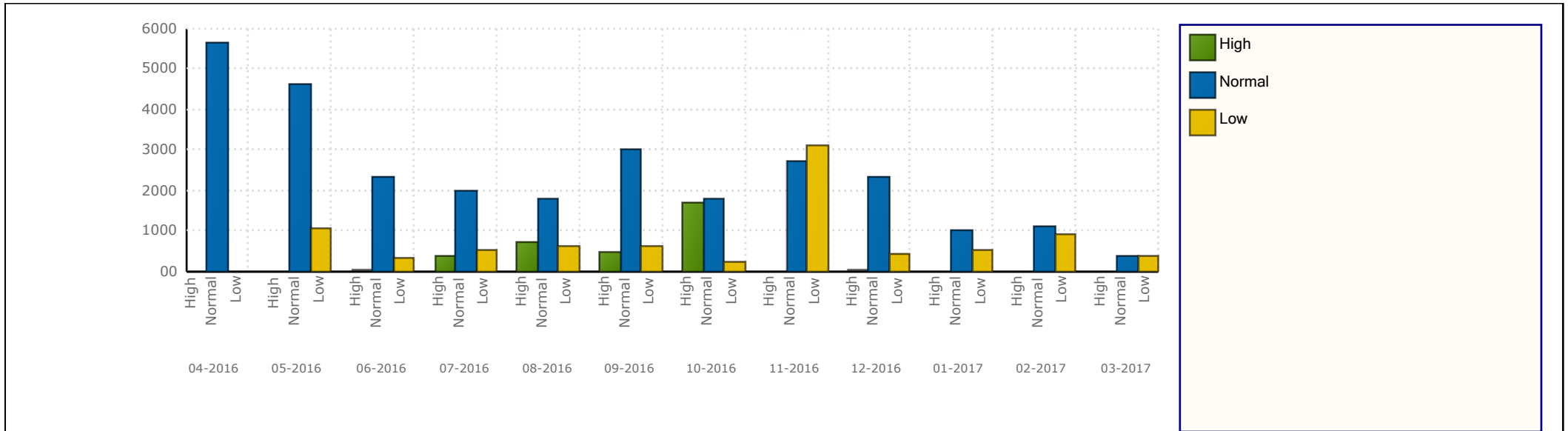


Monthly Normal Priority Corrective Job Count by Rectification Time Band

## Monthly Average & Maximum Rectification



Corrective Job Average Rectification Time - by Priority

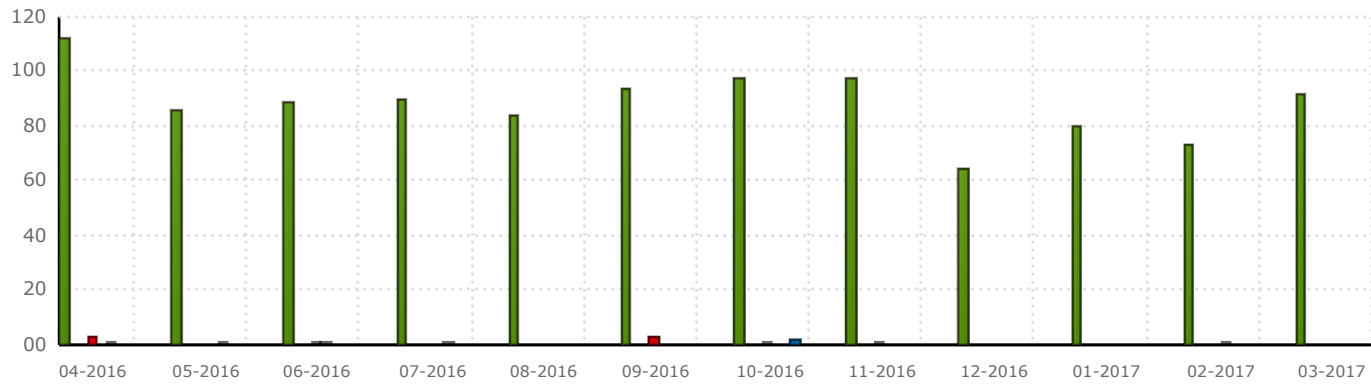


Corrective Job Maximum Rectification Time - by Priority

# Annual Response Time Analysis



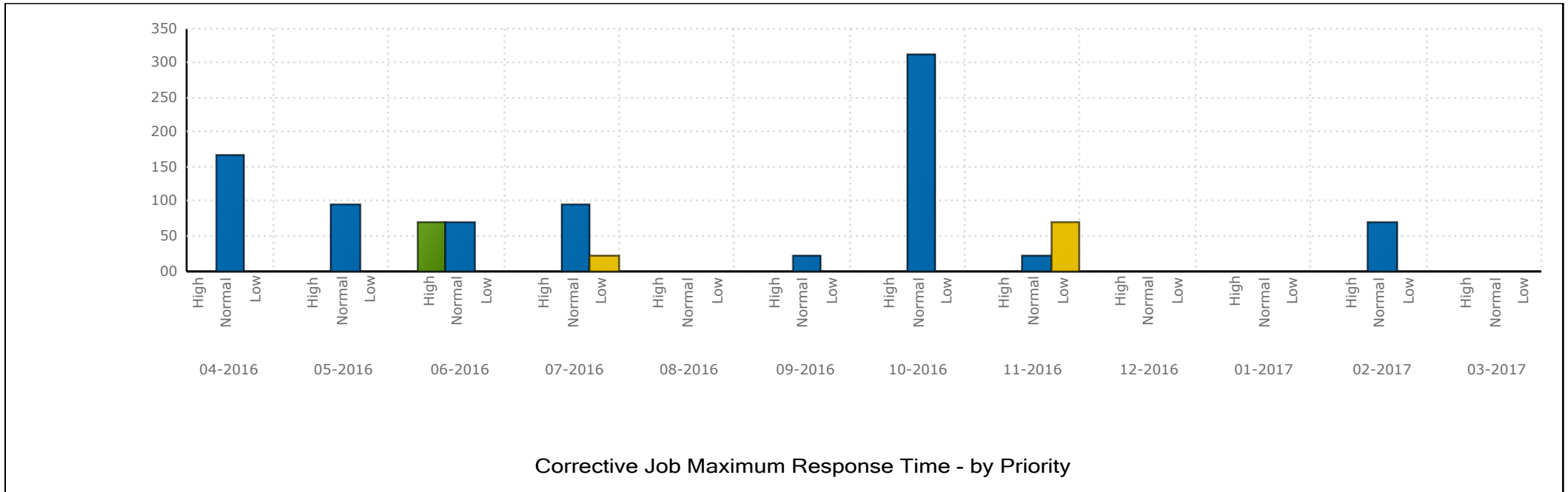
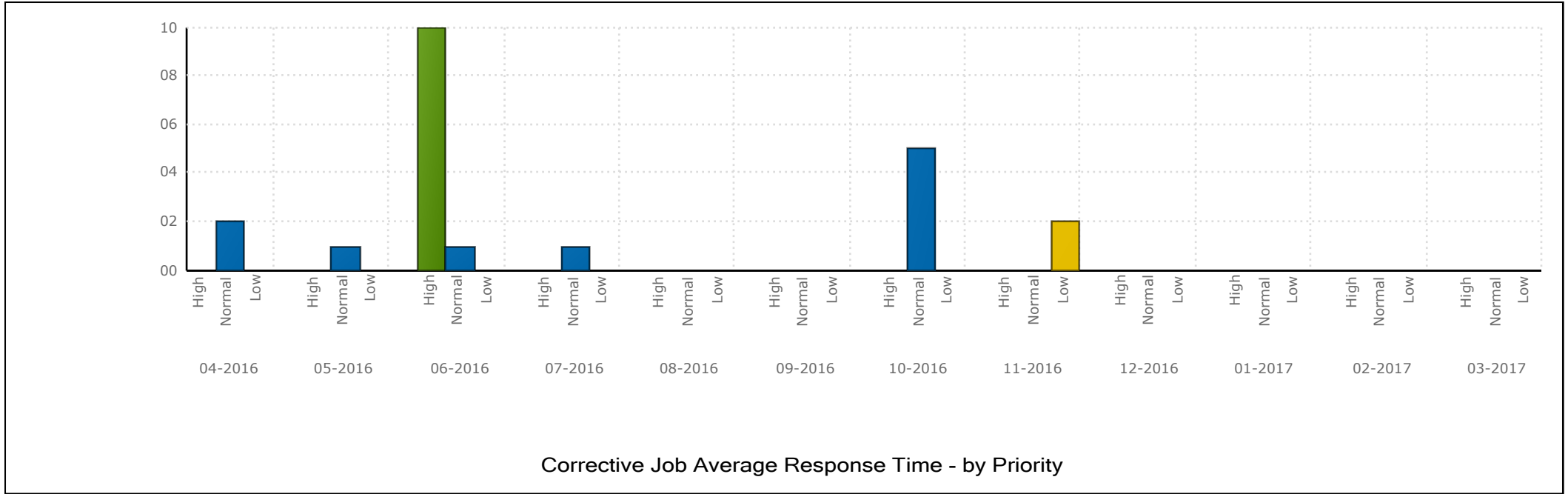
Monthly High Priority Corrective Job Count by Response Time Band



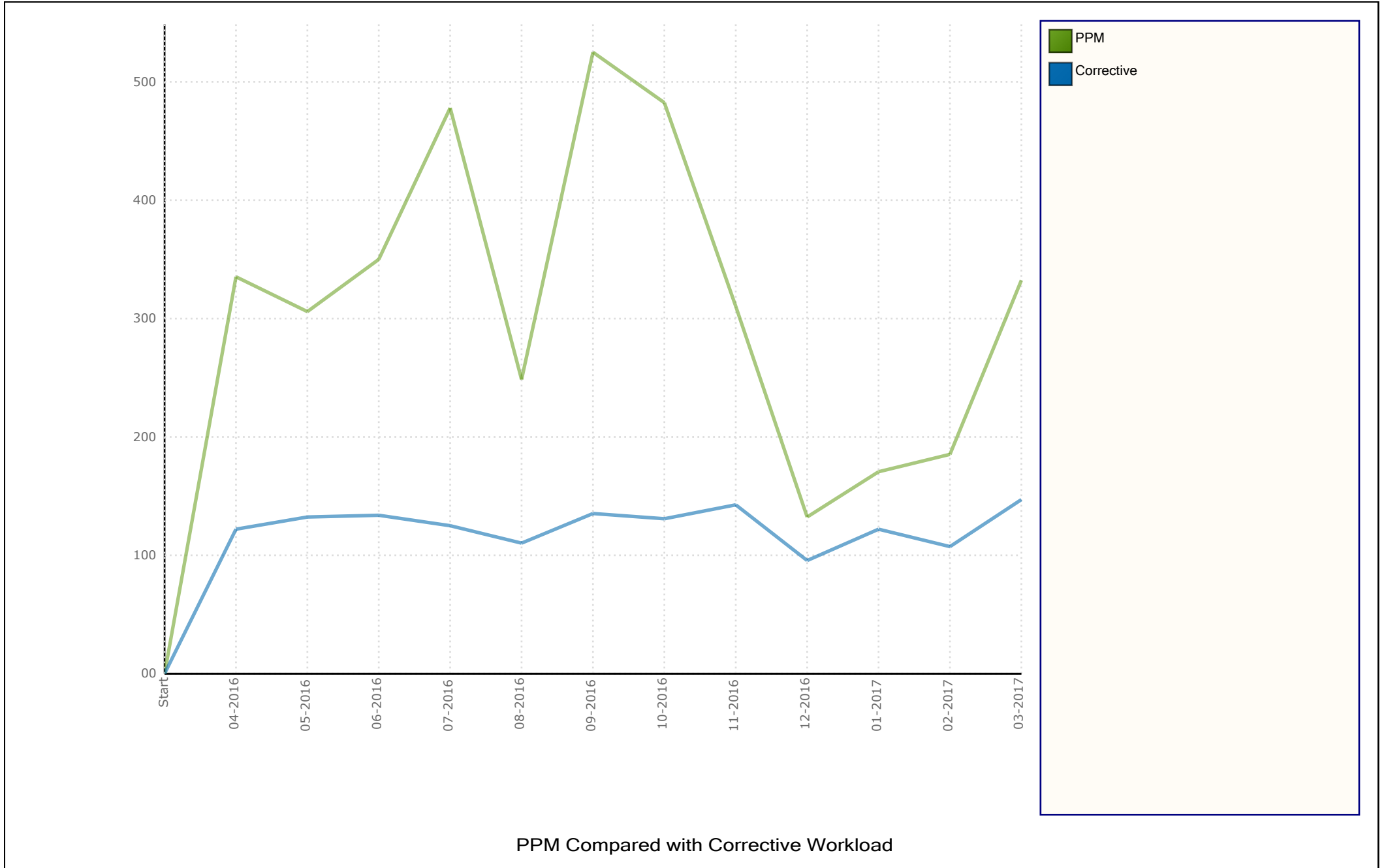
Monthly Normal Priority Corrective Job Count by Response Time Band



# Annual Response Time Analysis

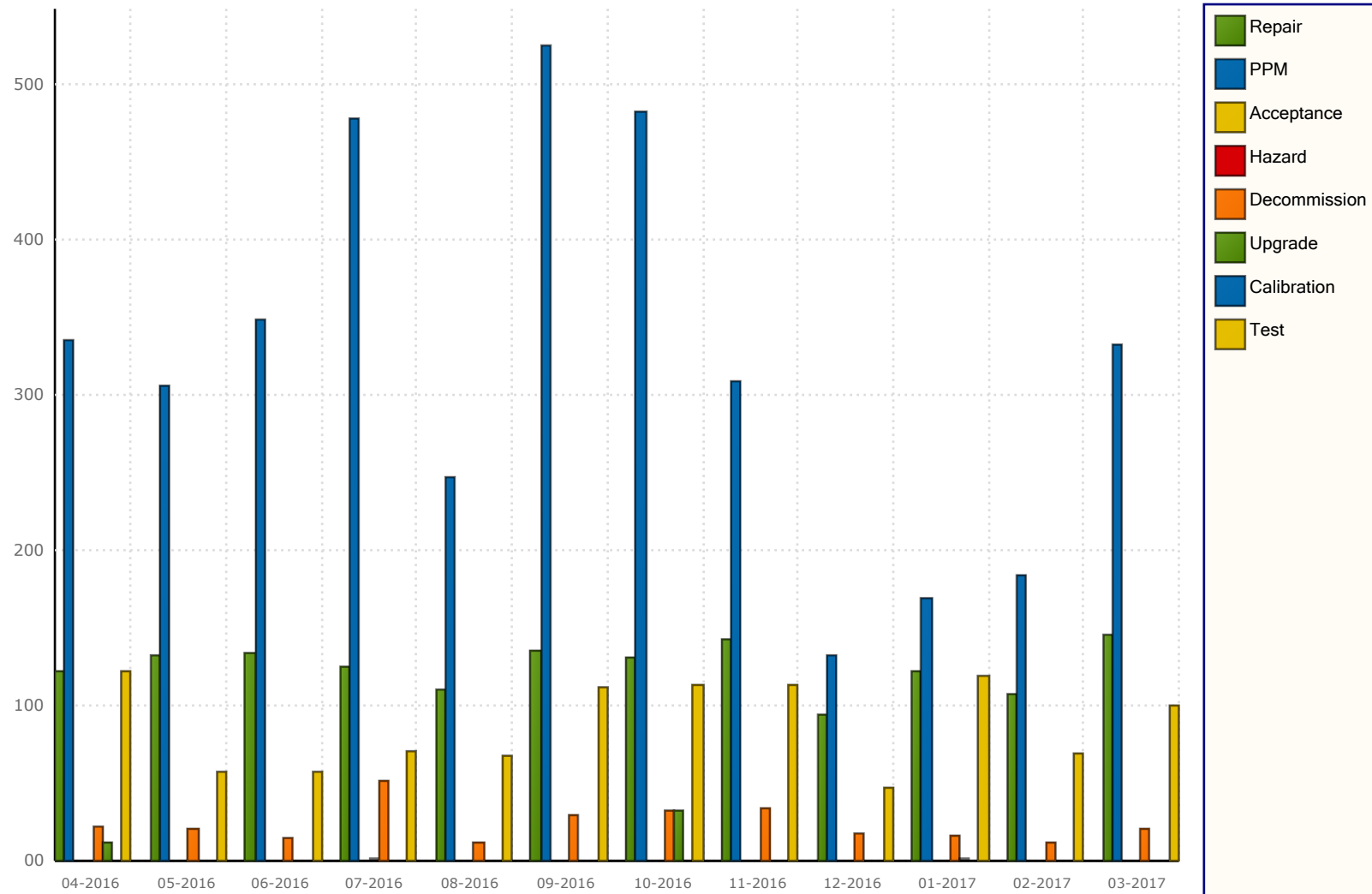


# PPM vs Repair Workload



PPM Compared with Corrective Workload

# Annual Job Type Time Analysis



Monthly Job Count Analysis by Type

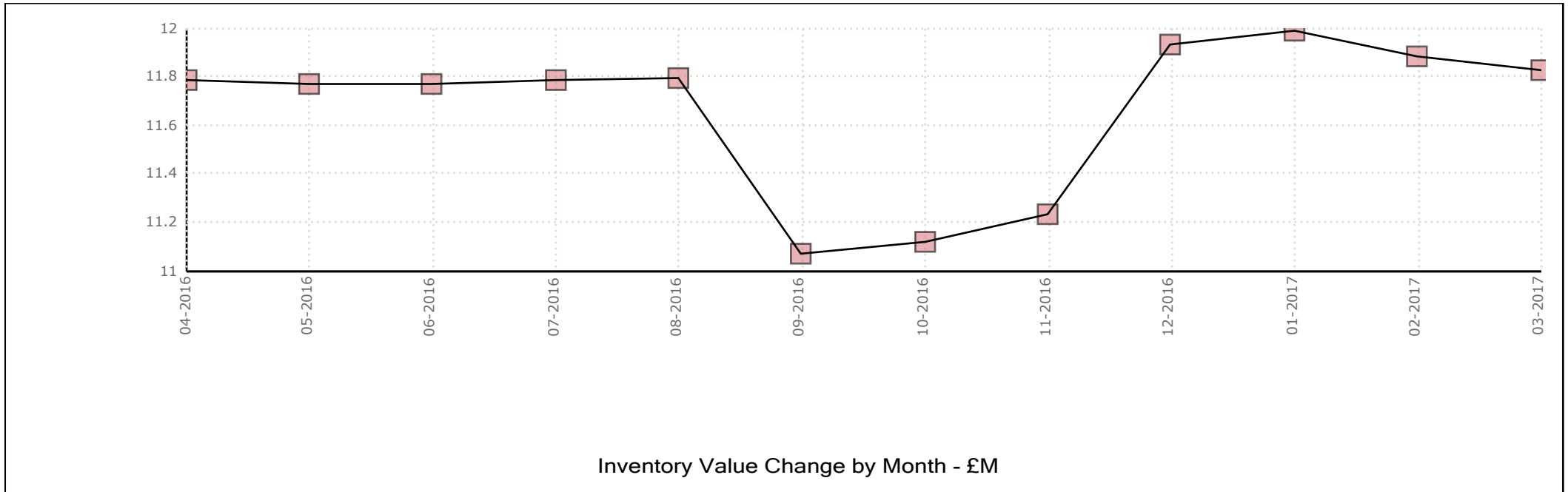
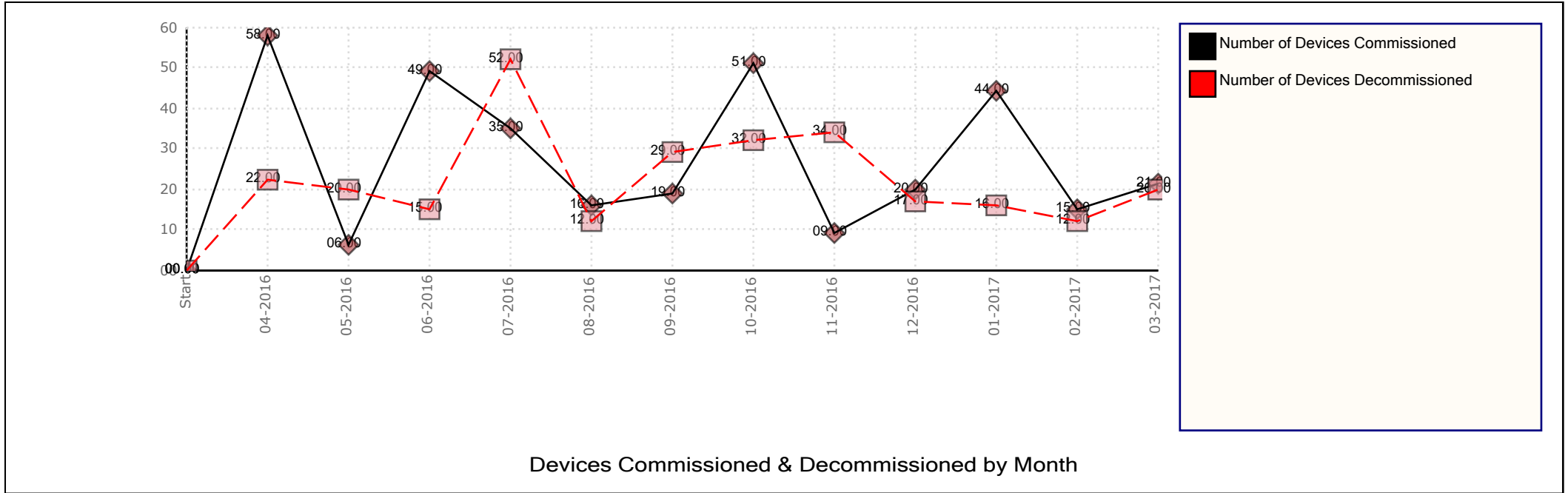
## Engineer Monthly Job Count

Engineer Name	04-2016	05-2016	06-2016	07-2016	08-2016	09-2016	10-2016	11-2016	12-2016	01-2017	02-2017	03-2017
Ified Frank	61	83	53	160	68	173	82	119	48	106	81	80
Mann Manfred	115	128	150	159	150	182	246	112	73	76	78	154
Price Alan	24	7	79	76	46	155	37	14	115	17	5	3
Kramer Billy	111	79	80	104	21	110	165	87	65	77	62	110

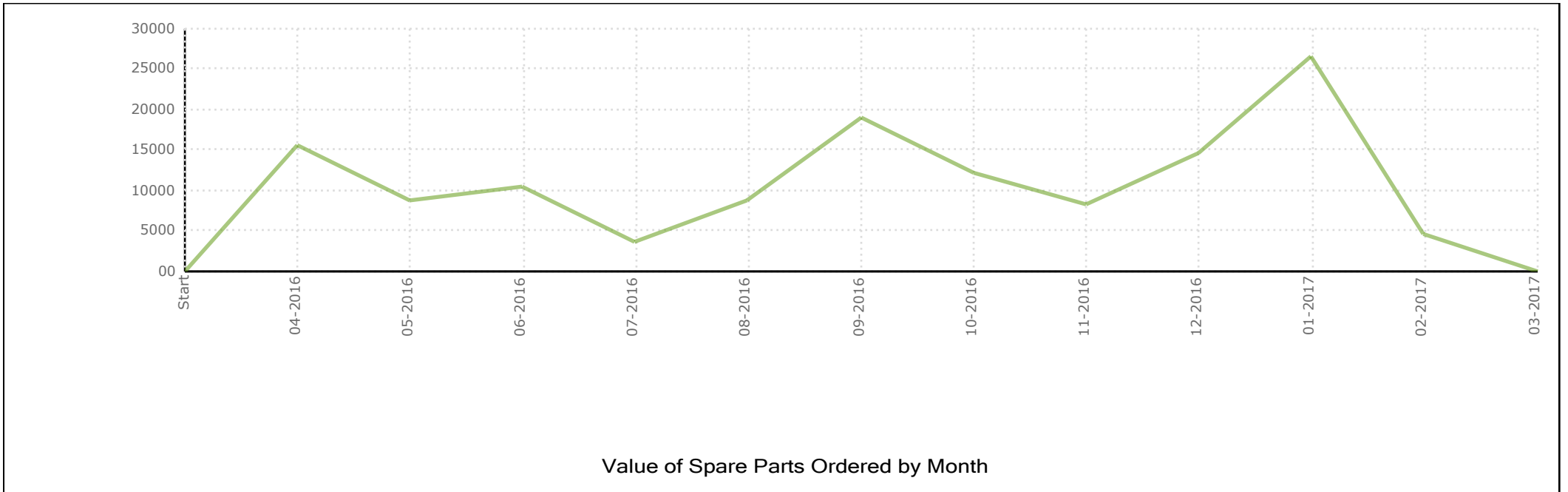
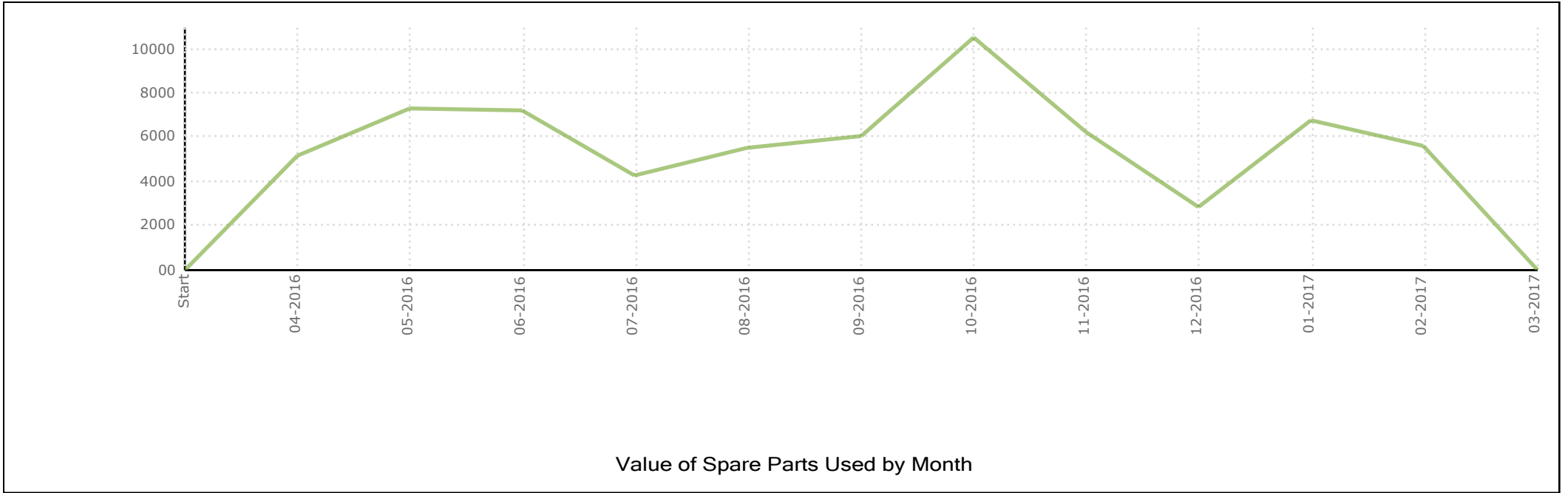
## Engineer Monthly Manhours Summary

Engineer Name	04-2016	05-2016	06-2016	07-2016	08-2016	09-2016	10-2016	11-2016	12-2016	01-2017	02-2017	03-2017
Ified Frank	73	69.5	66	108	65.5	117.75	65	84.5	41.25	90.5	67	67.5
Mann Manfred	72	83	163	102.75	116.5	106	139	75	40	71.5	63.25	111.25
Price Alan	25	4.5	26.5	40.5	23.5	48.5	20.25	12	39.75	9.5	2.5	4.5
Kramer Billy	71	55.5	107	75.75	23.5	79	104.7	69.5	58.31	69.5	52	99

# Monthly Inventory Changes



# Monthly Spare Part Consumption & Replenishment



# Monthly Loan Issue & Return

